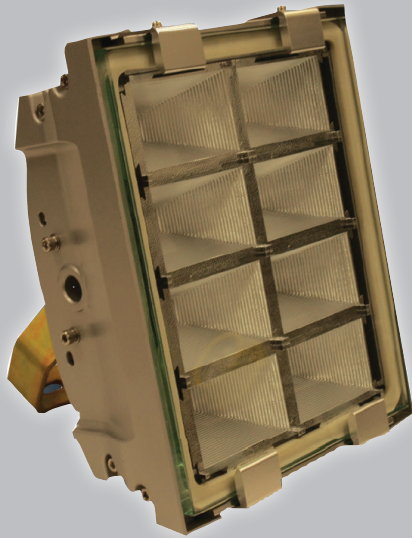


# Clarius®



## Clarius® EP

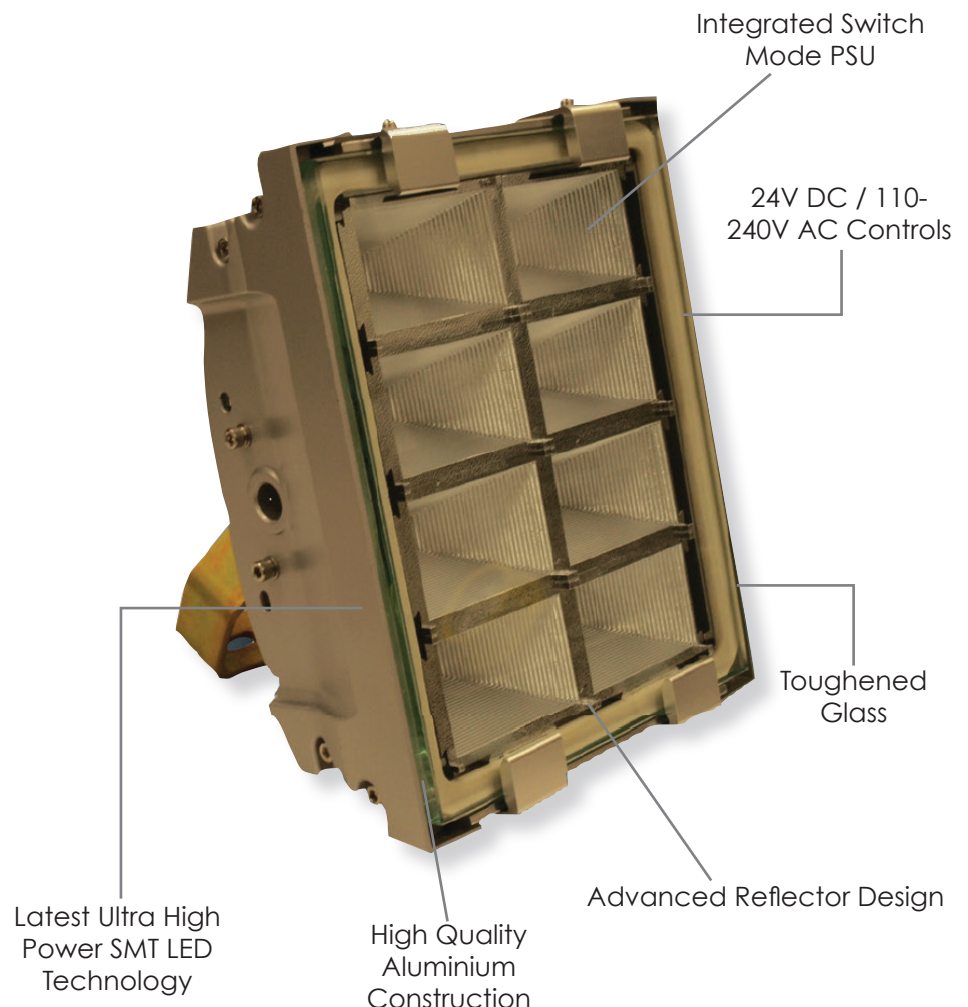
The Clarius EP range of intrinsically safe, high performance white light LED illuminators are designed to provide class leading performance, long life and ultra low maintenance.

Incorporating the latest ultra high power surface mount LEDs with enhanced optical output and outstanding reliability, they deliver excellent night time performance.

Each unit is fitted with integrated control circuitry to carefully control the LED output delivering consistent illumination and projected working life in excess of 10 years.

### PRODUCT FEATURES

- Intrinsically Safe White Light LED Illuminator
- High Quality Anodised and polyester coated housing
- Latest Ultra high power SMT LED Technology
- Angles: 60 degree Advanced Reflector design
- Low Power Consumption (45W)
- Long Life
- 3 Year Warranty
- IP65 Weather Proof Rating
- Input Voltage: 110-240V AC (24V DC option available)



### SECTORS



RESIDENTIAL



COMMERCIAL



INDUSTRIAL



BORDERS



MILITARY BASES



PORTS



POWER PLANTS



HERITAGE

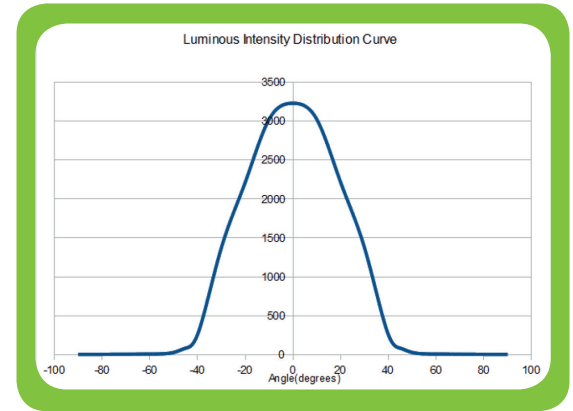


AIRPORTS

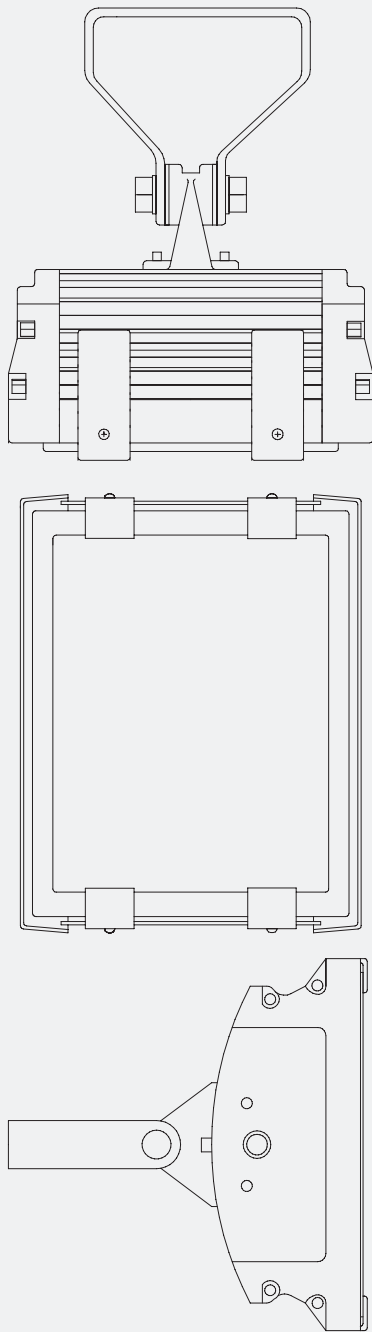


PRISONS

| PART NUMBER                          | MODEL NUMBER |
|--------------------------------------|--------------|
| Clarius EP White Light (110-240V AC) | VEP-CW60-HV  |
| Clarius EP White Light (24V DC)      | VEP-CW60-LV  |



## TECHNICAL SPECIFICATIONS



### GENERAL

#### Electronics

High Efficiency Surface Mount High Power LED's With Advanced Current Limited Integral Control Circuitry

#### Construction

Robust High Quality Aluminium Extrusion

#### Front Window

Toughened Glass

#### Finish

Silver Anodised and Polyester Coated

#### Power Cable

1m

#### Operating Temperature

-20° to 40°C

#### Weight

4.8Kg

#### Mount

Stainless Steel Wall Mount

#### Dimensions

204 x 278 x 115mm

### ELECTRICAL

#### Input Voltage

110-240 VAC or 24 VDC (option)

#### Power Consumption

45W

### LIGHTING OUTPUT

#### Lumen Output

>3200lm

#### Wavelength

Visible Spectrum (400-750nm)

#### Colour Temperature

6500k

#### Colour Rendering Index

70

### CERTIFICATION

#### Hazardous Environment

Exe IIC T6

#### Safety

EN60598:2004 Electrical Safety

#### IP

IP65 In Accordance With EN60529:1992

#### EMC

EN61000

#### WEEE

Waste Electrical & Electronic Equipment

European

Directive 202/96/EC

#### RoHS

Restriction Of Hazardous Substance European

Directive 202/95/EC

Please note GJD reserve the right to change the information within this document, without notice. **DSEP-31-08-15**

[www.gjd.co.uk](http://www.gjd.co.uk) | [info@gjd.co.uk](mailto:info@gjd.co.uk) | +44 (0) 1706 363 998

Unit 2 Birch Business Park, Whittle Lane, Greater Manchester, Lancashire, OL10 2SX

